

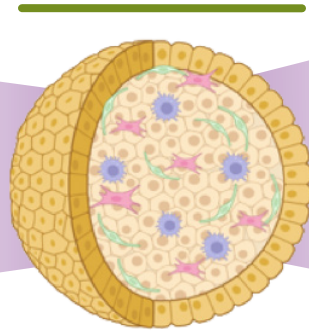
# InSphero MASH CALL Initiative

## Fast and Reliable Identification and Comparison of Clinical Candidates

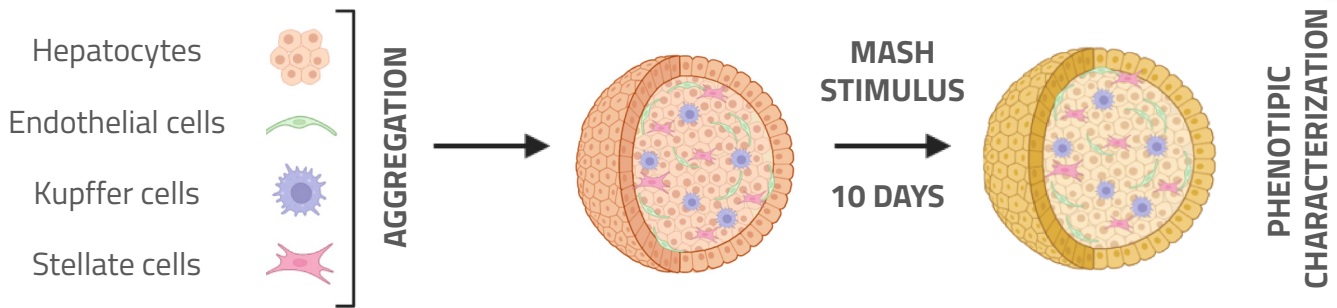
MASH (Metabolic Dysfunction-associated Steatohepatitis) is a complex, multi-faceted disease, affecting more than 115 million individuals worldwide. 3D InSight™ Human MASH Model is designed to reflect this complexity of the disease, empowering simultaneous assessment of multiple parameters, including steatosis, inflammation, and fibrosis. Consequently, you and your team gain a more comprehensive understanding of your asset's impact and efficacy.

### 3D InSight™ Human MASH Model Empowering MASH *In Vitro* Research

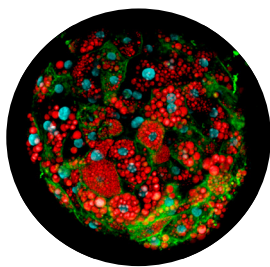
Unmet clinical need  
Failure of current models  
Multifactorial disease



Reliable, reproducible and scalable liver model  
Reproducing cellular interactions  
Allowing combinatorial treatments

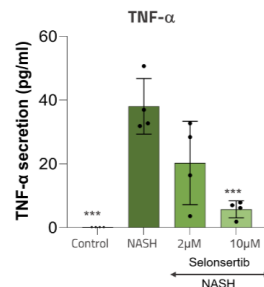


#### Steatosis



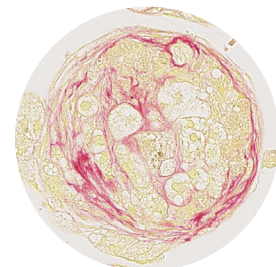
Lipid staining (bodipy)

#### Inflammation



Secretion of TNFα

#### Fibrosis



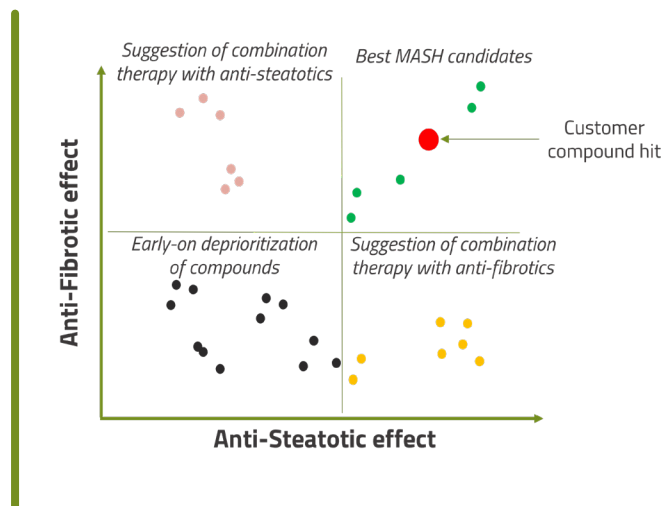
Sirius red staining

# InSphero MASH CALL Initiative - Q1 2024

Select and compare the best **anti-steatotic** and **anti-fibrotic** drug candidates and follow-up with a comprehensive **phenotypic analysis**

## Why MASH Screening with InSphero?

- Fast and translational MASH phenotypic candidate selection process
- Most cost-effective human pre-clinical model
- Benchmarking with clinical candidates
- On demand combinatorial drug approach
- Possibility to a comprehensive phenotypic analysis follow-up



## MASH CALL Workflow

